

41-146

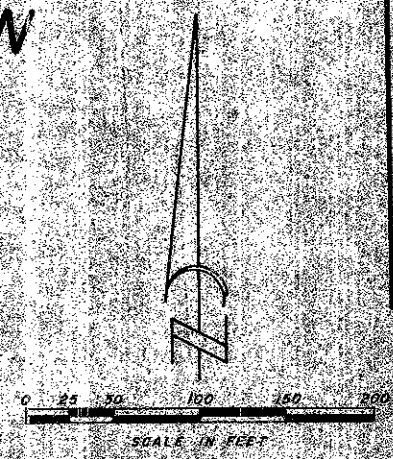
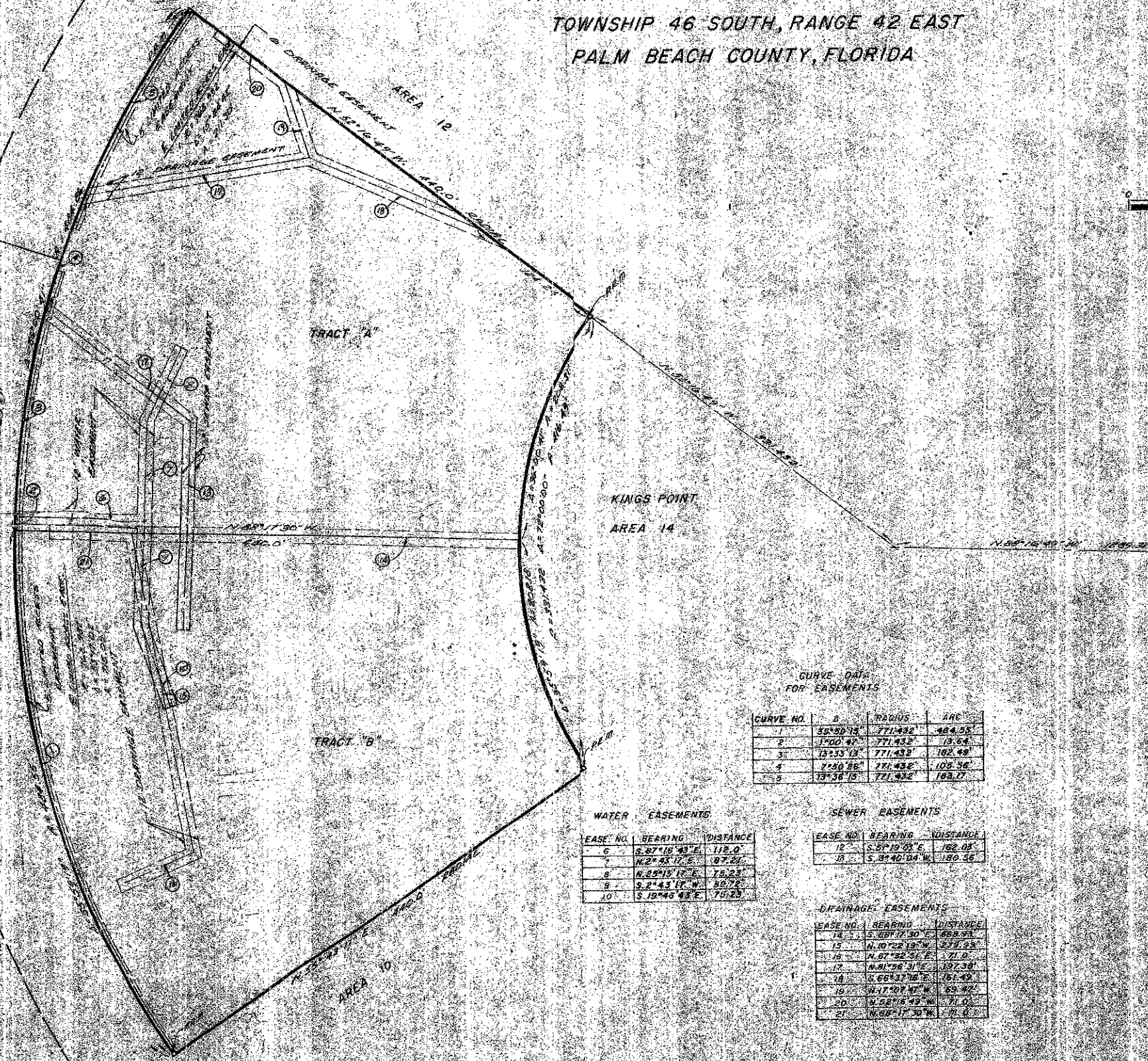
PART OF A PLANNED UNIT DEVELOPMENT KINGS POINT PLAT NO. SEVEN

A PART OF THE S.E. 1/4 OF SECTION 23
TOWNSHIP 46 SOUTH, RANGE 42 EAST
PALM BEACH COUNTY, FLORIDA

KINGS POINT
PLAT NO. FOUR P.B. 41
PAGES 29 & 30

KINGS POINT
AREA NO. FIVE

GAS VEHICLES CURVE



CURVE DATA FOR EASEMENTS

CURVE NO.	B	RADIUS	ARC
1	55°50'12"	771.432'	104.53'
2	1°00'42"	771.432'	13.64'
3	13°33'12"	771.432'	102.42'
4	7°50'26"	771.432'	105.36'
5	19°36'10"	771.432'	103.17'

WATER EASEMENTS

EASE NO.	BEARING	DISTANCE
6	S. 87°16'43" E	112.0'
7	N. 2°43'17" E	107.21'
8	N. 29°15'17" E	75.23'
9	S. 2°43'17" W	85.72'
10	S. 19°46'43" E	75.23'

SEWER EASEMENTS

EASE NO.	BEARING	DISTANCE
12	S. 57°19'05" E	162.03'
13	S. 37°40'04" W	180.36'

DRAINAGE EASEMENTS

EASE NO.	BEARING	DISTANCE
11	S. 60°17'30" E	109.33'
12	N. 10°02'19" W	273.53'
13	N. 67°32'51" E	71.0'
14	N. 11°56'31" E	197.30'
15	S. 66°37'36" E	151.49'
16	N. 17°07'40" W	83.42'
17	N. 52°16'49" W	71.0'
18	N. 68°17'30" W	71.0'

PREPARED BY
E. BRETT GULBEPPER
C.F.S. AND ASSOCIATES, INC.
CONSULTING ENGINEERS
FT. PIERCE, FLORIDA